

Receiving and Placing Orders
Consulting Service Desk

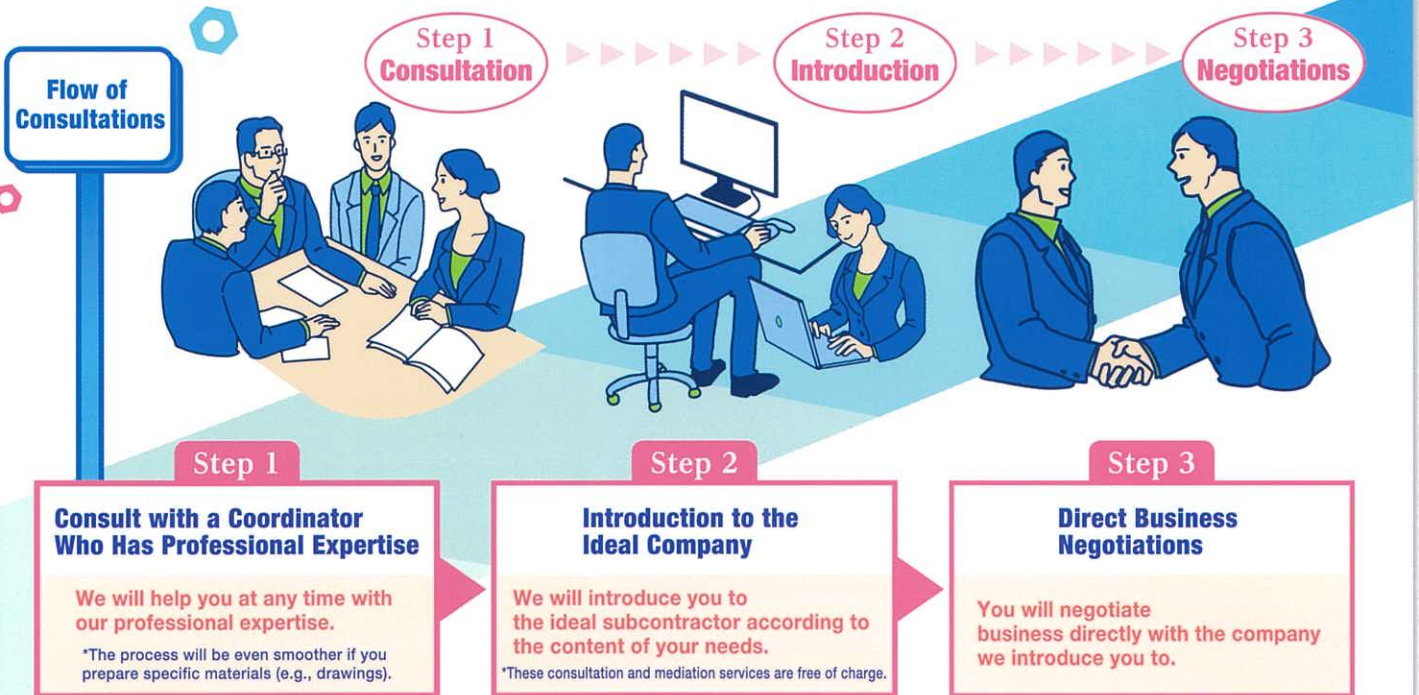
Free
Consultation

For Those in Need of Manufacturing Services

Search for your ideal partner in Ota :
City of Manufacturing.

Ota is home to approximately 4,000 manufacturers with excellent technologies and skills. Many of these companies specialize in difficult processing, prototypes and design, and research and development. These companies have an indispensable presence in various fields of manufacturing. If you are searching for a processing/manufacturing subcontractor or joint development partner, we will introduce you to companies in Ota with reliable technologies.

—Record—
1,000 cases
a year



Areas of Industry Where We Can Provide Introductions and Help

Sheet Metal and Can Manufacturing / Lathes / Machining / Wire Cutting and Electrical Discharge Machining / Forging / Casting / Springs / Resin Cutting / Injection Molding / Compression Molding / Vacuum Forming and Pressure Forming / Grinding / Cutting / Assembly / Printed Circuit Boards / Electrical Parts / Plating and Anodized Aluminum / Painting / Printing / Design and Development / Software / Final Products and equipments / Other

Receiving and Placing Orders
Consulting Service Desk

Ota City Industrial Promotion Organization:

HICity zone K 209, 1-1-4, Haneda Kuko,
Ota-ku, Tokyo, 144-0041, Japan

TEL

+81(3)-5579-7971

(9a.m. to 5p.m. Japan time on weekdays)

Mail

kaigai@pio-ota.jp

For Those Searching for Subcontractors and Joint Development Partners

Example 1

Company Placing the Order ×

Company Receiving the Order:
Company in Ota

Parts Aligner Manufacturer × Eight Sangyo Co., Ltd.

Development of an Automatic Micro Switch Assembly Device

■ Content of Consultation

The client wanted to automate the assembly of micro switches it was doing so by hand.

■ Content of Help and Introduction

We determined that the company would need integrated help – from the mechatronics design to assembly. Therefore, we introduced it to a company in Ota with experience in the design, development and assembly of various machines and devices. That company solved many challenges and developed an automatic assembly device according to the specifications and demands of the client.



Example 2

Company Placing the Order ×

Company Receiving the Order:
Company in Ota

Ota City Office × Unuma Co., Ltd.

Manufacture of an Ascending / Descending Pitcher's Mound

■ Content of Consultation

The city wanted a pitcher mound that ascended and descended to accompany the renovation of the facilities at Ota stadium.

■ Content of Help and Introduction

We introduced the city office to a company in Ota that specializes in the manufacture of both small and large structures and work of art monuments. That company flexibly responded to changes in the plan and additional orders with its own technological strengths and by linking up with partner factories.



Message from Our Coordinators

The Receiving and Placing Orders Consulting Service in Ota has a history of more than 20 years. We receive consultations of various content in approximately 1,000 cases a year. The requested content from the processing of one article to manufacturing including design is wide-ranging. We endeavor to introduce the ideal companies to solve the challenges of our clients. In addition, we periodically visit companies in Ota to update ourselves daily about the technological trends and facility environments in those companies. We are working to improve the precision of our matching services with this. There are many companies with advanced technologies in Ota: City of Manufacturing. Please feel free to consult with us when you are in need of manufacturing services.



Receiving and Placing Orders Consulting Service Desk:
+81(3)-5579-7971 (9a.m. to 5p.m. Japan time on weekdays)

Ota City Industrial Promotion Organization:
HICity zone K 209, 1-1-4, Haneda Kuko, Ota-ku, Tokyo, 144-0041, Japan